



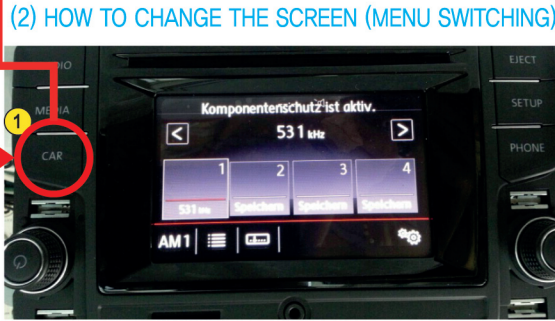
2014 VOLKSWAGEN NEW POLO 5" SCREEN VIDEO INTERFACE - R30FP

1) APPLIED FOR : VOLKSWAGEN 2014 NEW POLO 5"

(1) DIP SWITCH SETTING [ON (DOWN) 0 : ↓ off on / OFF(UP) 1 : ↑ off on]



- DIP_SW1 : Navigation On/Off
- DIP_SW2 : AV1 On/Off
- DIP_SW3 : AV2 On/Off
- AV3 On/Off
- (REMOTE CONTROL SETTING MENU)
- DIP_SW4 : Rear View Camera On/Off
- DIP_SW9 : Screen Resolution 800 Off / 480 On
- DIP_SW10 : On

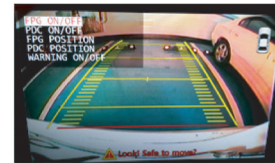
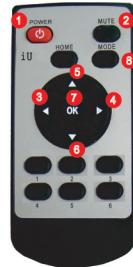


PRESS 'CAR' BUTTON SHORT (MUST SOLDER BLUE WIRE)

2) TOGGLE SWITCH

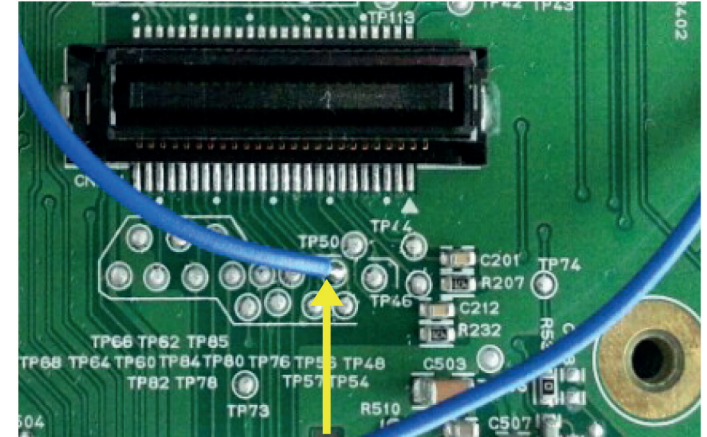


(3) HOW TO ENTER REMOTE CONTROL SETTING MENU



PRESS OK BUTTON 4 TIMES THAN YOU WILL SEE THE NUMBERS 1 ON THE LEFT TOP OF THE SCREEN FROM 1-4, WHEN IT'S NUMBER 4, PRESS THE 1 BUTTON TO ENTER THE SETTING MODE

TO USE ORIGINAL CAR BUTTON SWITCHING

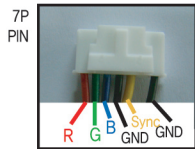


※ TO USE ORIGINAL CAR BUTTON THIS BLUE WIRE MUST BE SOLDERED. ※

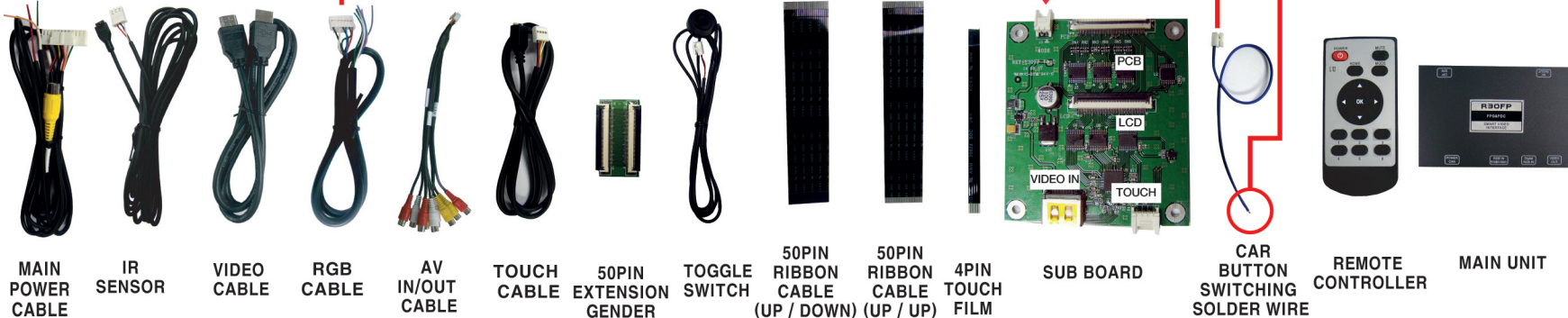
2) REAR VIEW CAMERA SWITCHING :

- CONNECT THE GREEN CABLE FROM THE MAIN POWER CABLE FOR REVERSE SIGNAL DETECTION.

RGB PIN OUT:

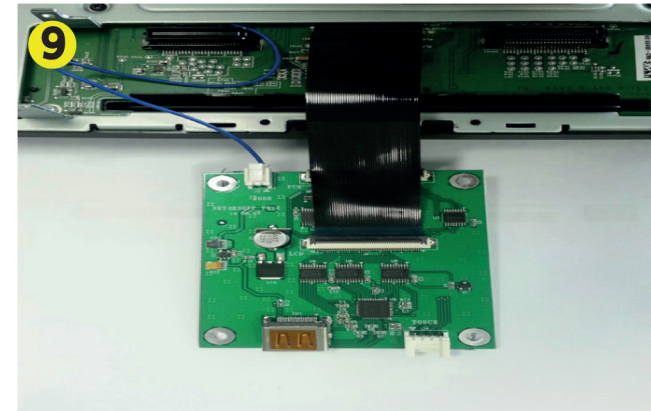
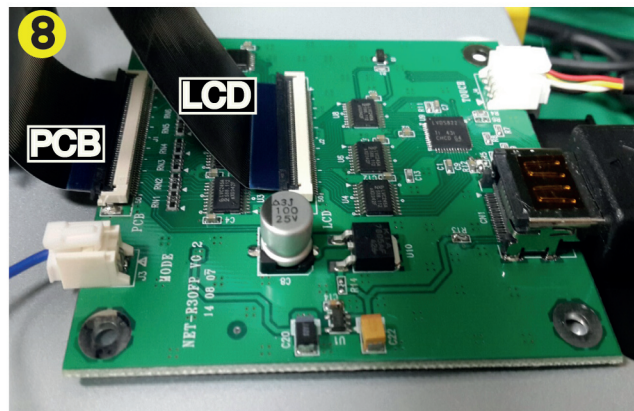
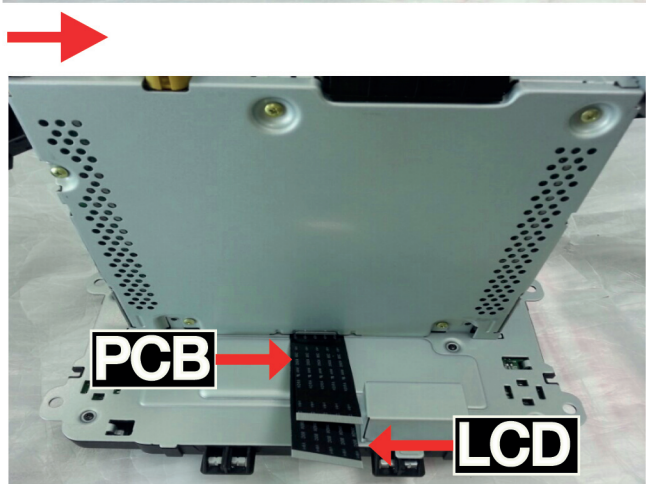
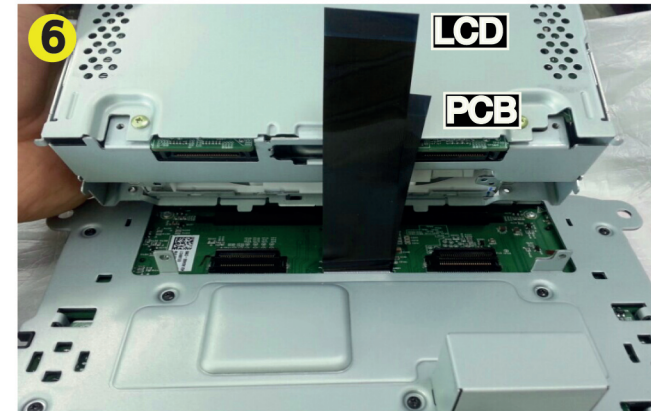
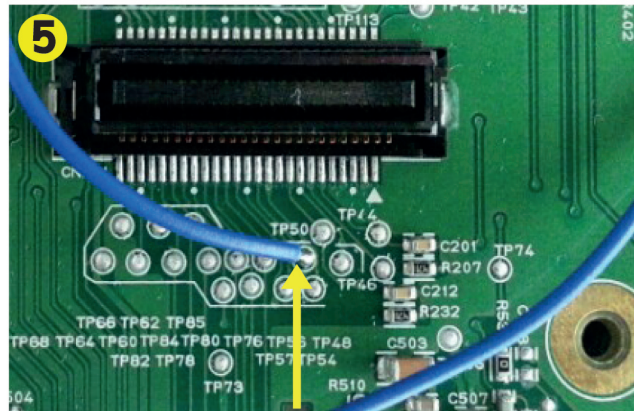
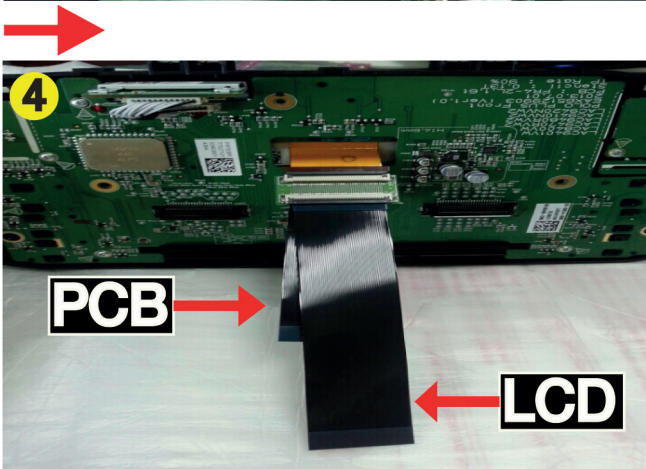
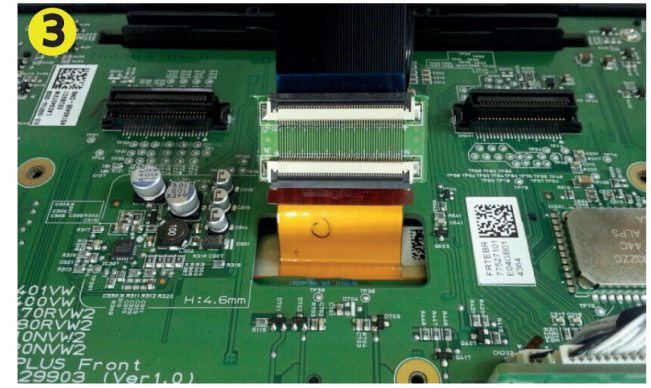
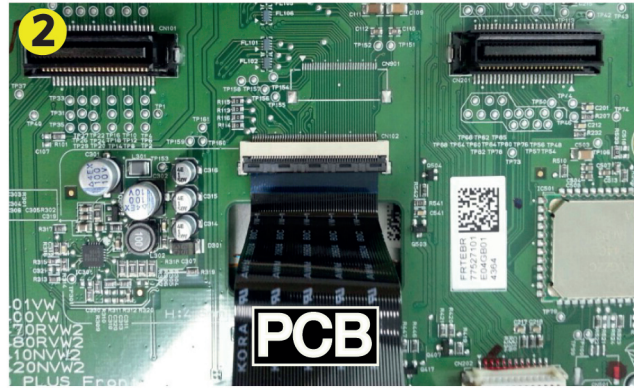


[COMPONENTS]



※ MAIN POWER CABLE PIN OUT ※

- ACC, B+
- GND
- CAM REAR 12V OUT
- IR
- NC
- NC
- REVERSE





2014 VOLKSWAGEN NEW POLO 5" SCREEN VIDEO INTERFACE - R30FP

