



VOLKSWAGEN

1. NEW RCD550
2. NEW RCD550H




MAIN UNIT

<p>1</p> <p>[NEW RCD550]</p>	<p>2</p> <p>[NEW RCD550H]</p>		
Car Brand	Model	Year Range	System
VOLKSWAGEN	NEW RCD550 NEW RCD550H		

COMPONENTS(2-1)

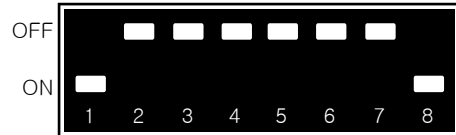
<p>1 MAIN UNIT</p>	<p>2 MAIN CABLE</p>	<p>3 RCD550P SERVE BOARD</p>	<p>4 IR CABLE</p>
<p>5 HDMI CABLE</p>	<p>6 60PIN X 90mm FILM</p>	<p>7 4PIN X 170mm FILM</p>	<p>8 24PIN X 200mm FILM</p>
<p>9 RCD550 GENDER</p>	<p>10 PUSH S/W</p>	<p>11 TOUCH CABLE</p>	<p>12 4PIN FILM</p>
<p>13 RGB CABLE</p> <p>※ OPTION ※</p>	<p>14 REMOTE CONTROL</p> <p>※ OPTION ※</p>	<p>15 HDMI AUDIO CABLE</p> <p>※ USE FOR HDMI MODEL ※</p>	

COMPONENTS(2-2)

<p>15 AV GENDER BOARD</p>  <p>※ OPTION ※</p>	<p>16 AV IN/OUT CABLE</p>  <p>※ OPTION ※</p>	<p>17 AV GENDER CABLE</p>  <p>※ OPTION ※</p>
---	--	---

DIP S/W

OFF : ↑ (UP) / ON : ↓ (DOWN)



NEW RCD550

PIN	FUNCTION	DIP S/W SETTING
1	GPS INPUT MUTE	OFF : DO NOT USE NAVI ON : USE NAVI
2	VEHICLE SETTING	
3	VEHICLE SETTING	
4	REAR CAMERA	OFF : OEM CAMERA ON : AFTERMARKET CAMERA
5	NC	
6	NC	
7	VEHICLE SETTING	
8	ON	

NEW RCD550, NEW RCD550H SPEC

1. INPUT SPEC

- 1 x Analog RGB Input(GPS system output)
- 1 x LVDS Input
- 1 x LVDS output
- 1 x CVBS(rear camera)
- 1 x CVBS(front camera or A/V)
- 1 x HDMI(USE FOR HDMI MODEL-RCD550H)
- 3 x A/V Input(Option)

2. OUTPUT SPEC

- 1 x CVBS
- 1 x Audio L/R

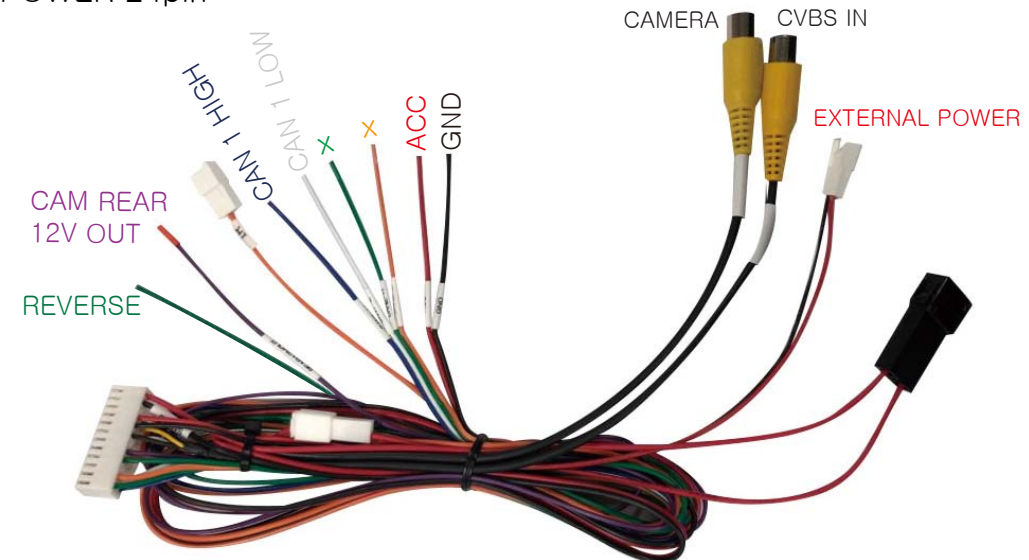
3. POWER SPEC

- Input power : 8VDC ~ 24VDC
- Consumption : 5WATT

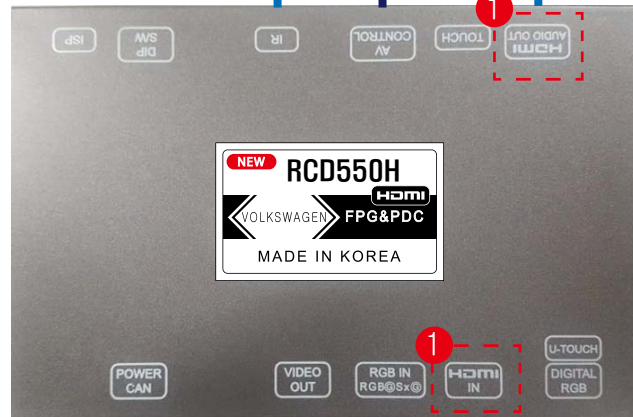
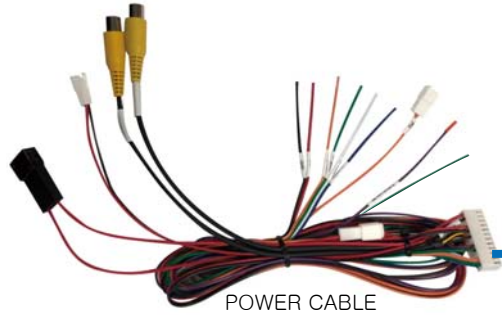
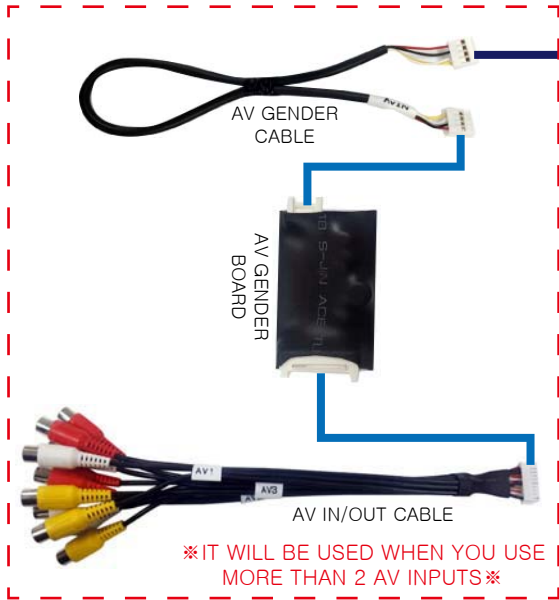
4. SIZE

- 154*98*20mm(Width*Length*Height)

5. POWER 24pin



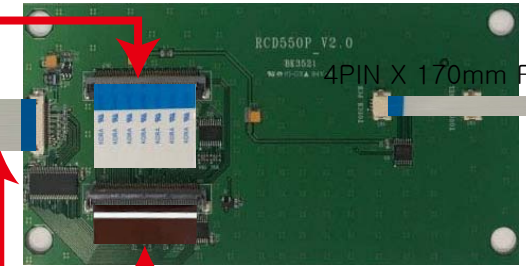
CONNECTION (NEW RCD550H)



60PIN X 90mm FILM



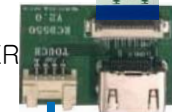
RCD550P SERVE BOARD



24PIN X 200mm FILM

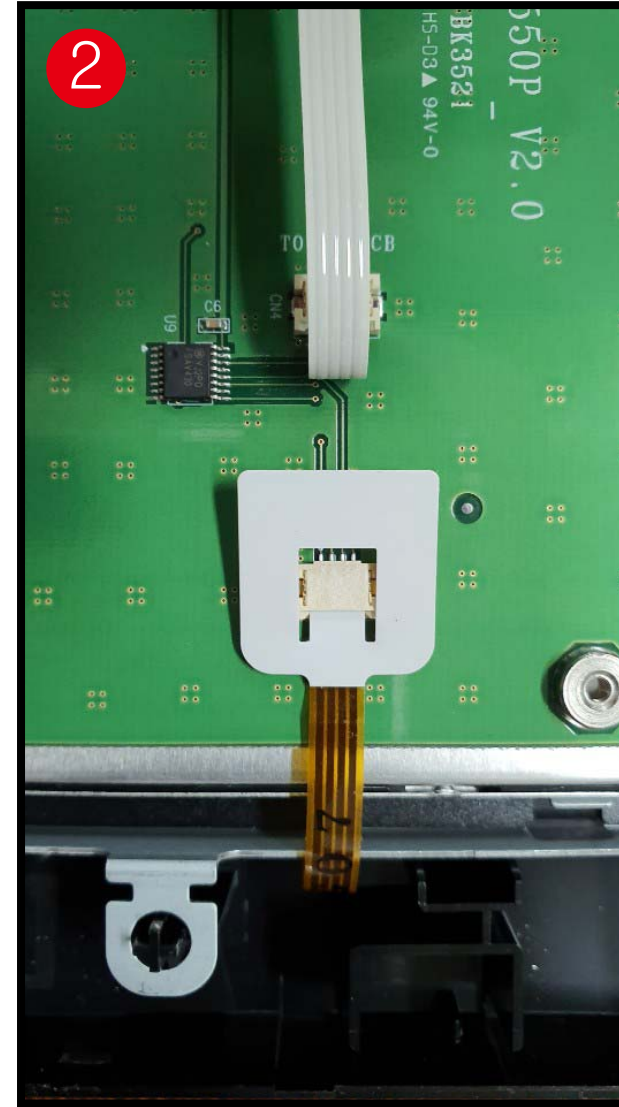
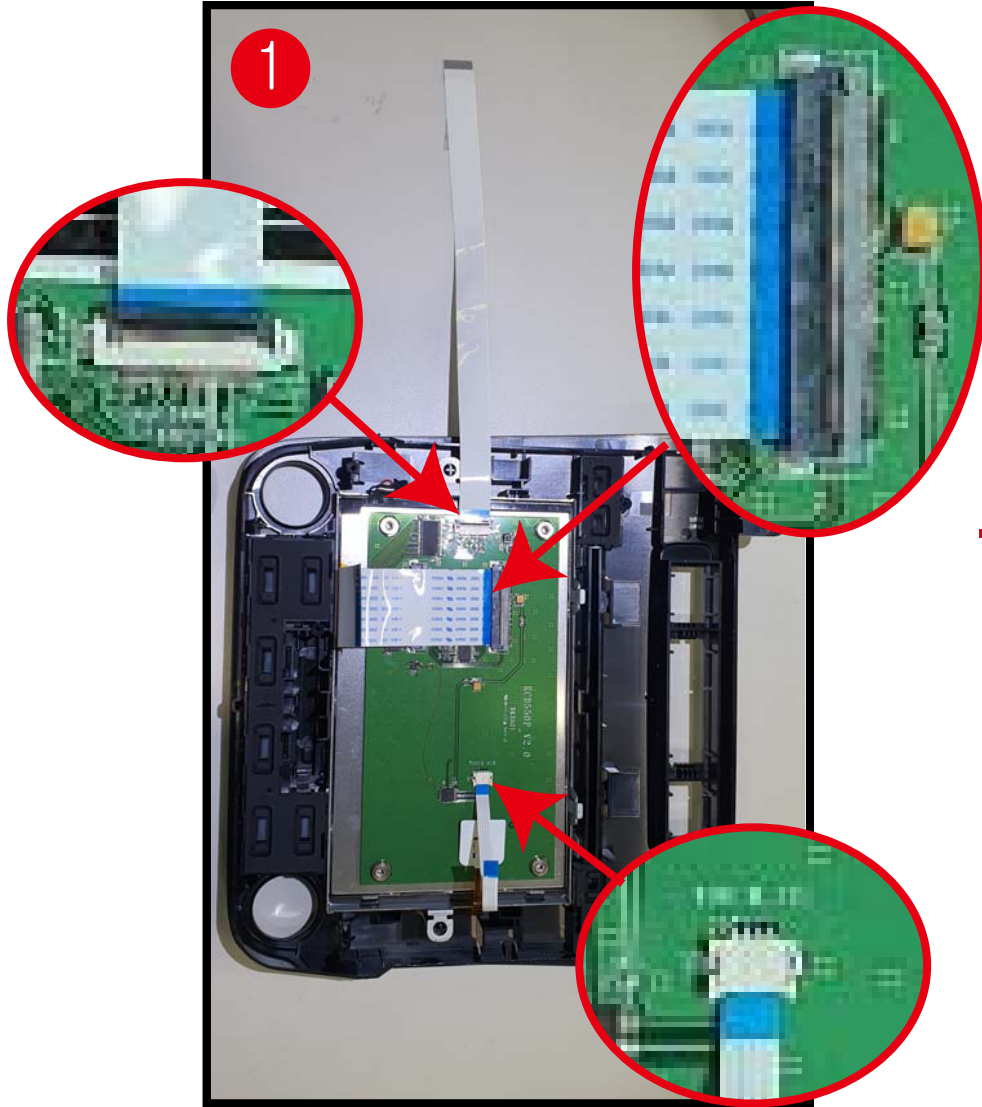


RCD550 GENDER

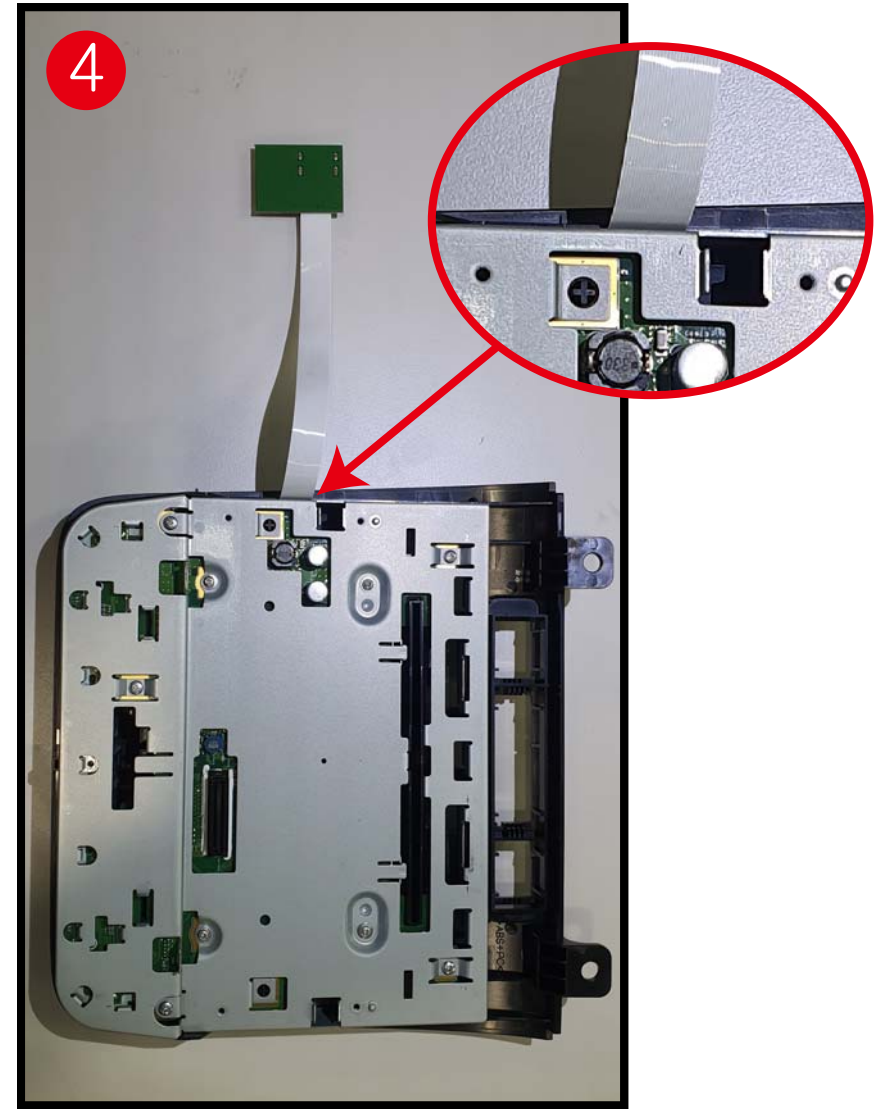
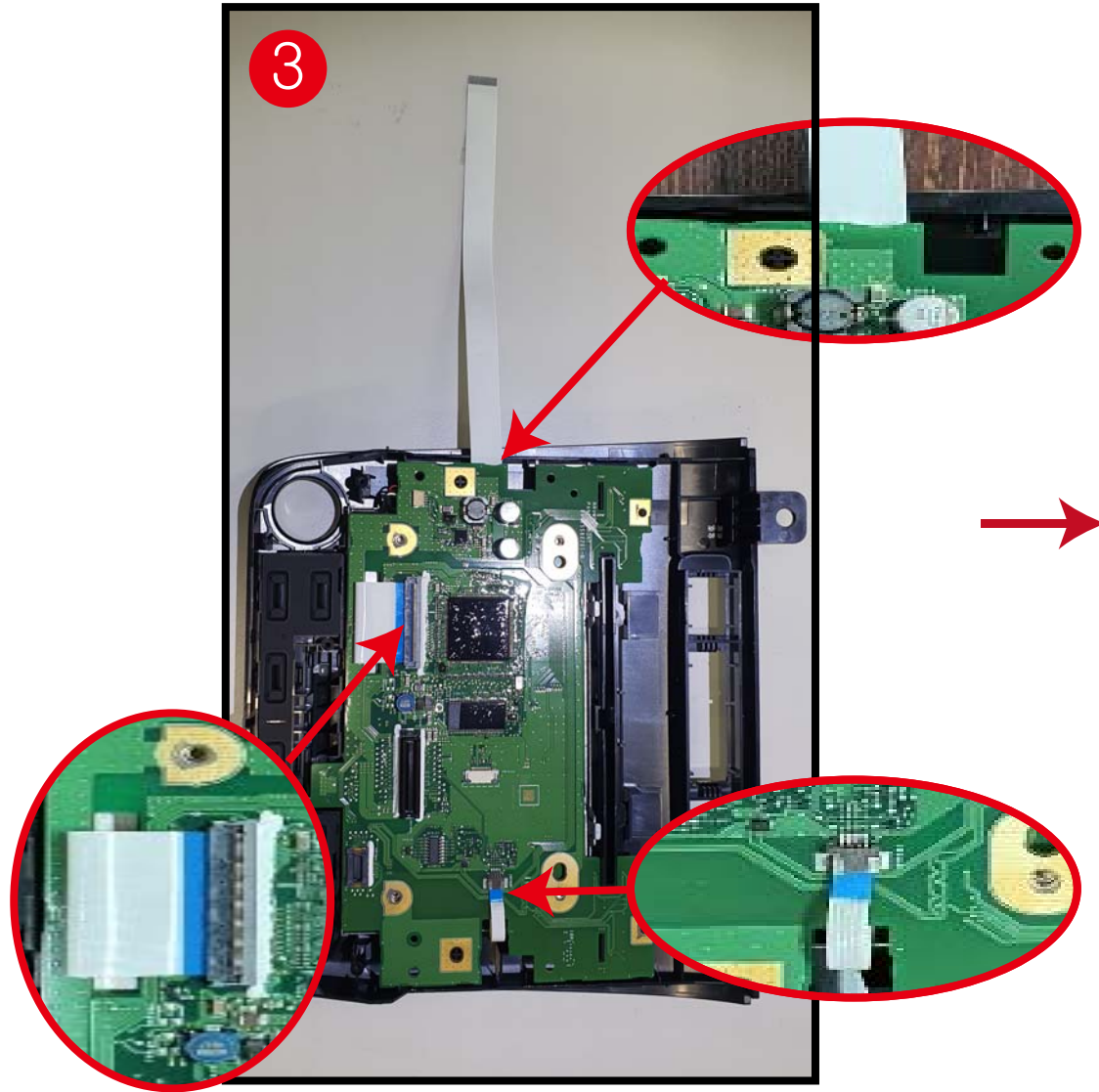


※ 1 USE FOR HDMI MODEL ※

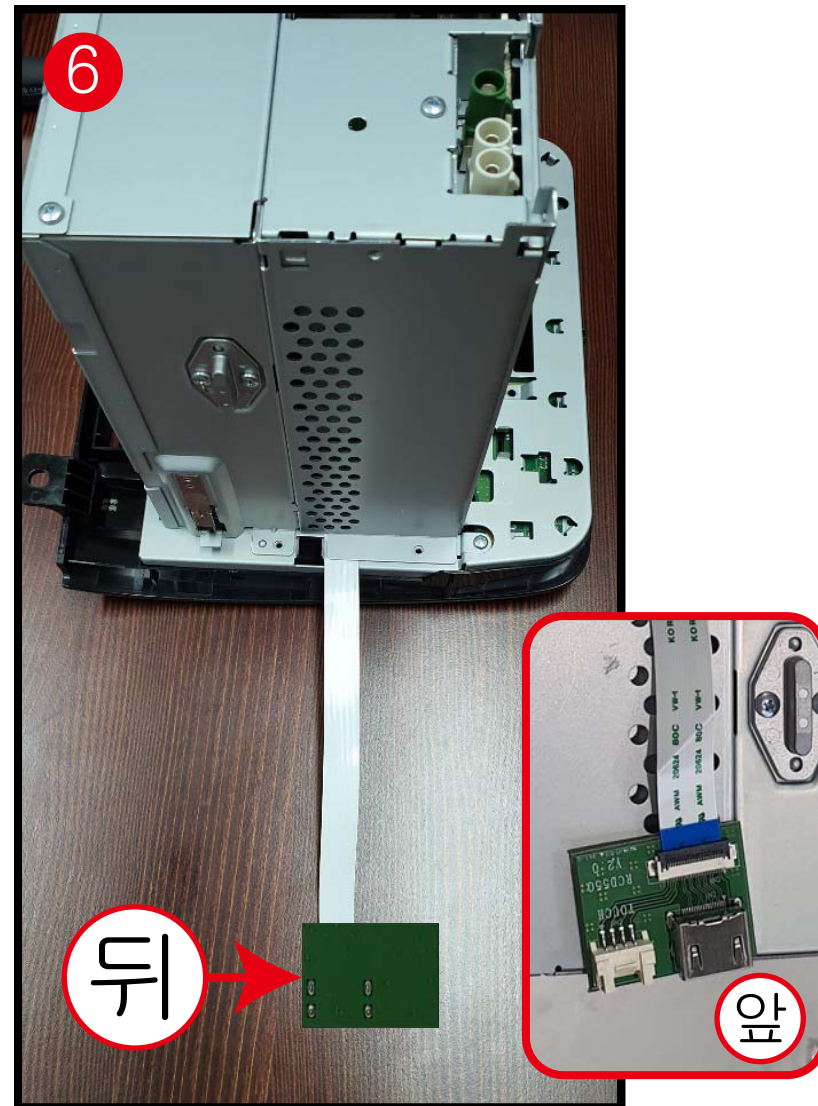
INSTALLATION(5-1)



INSTALLATION(5-2)



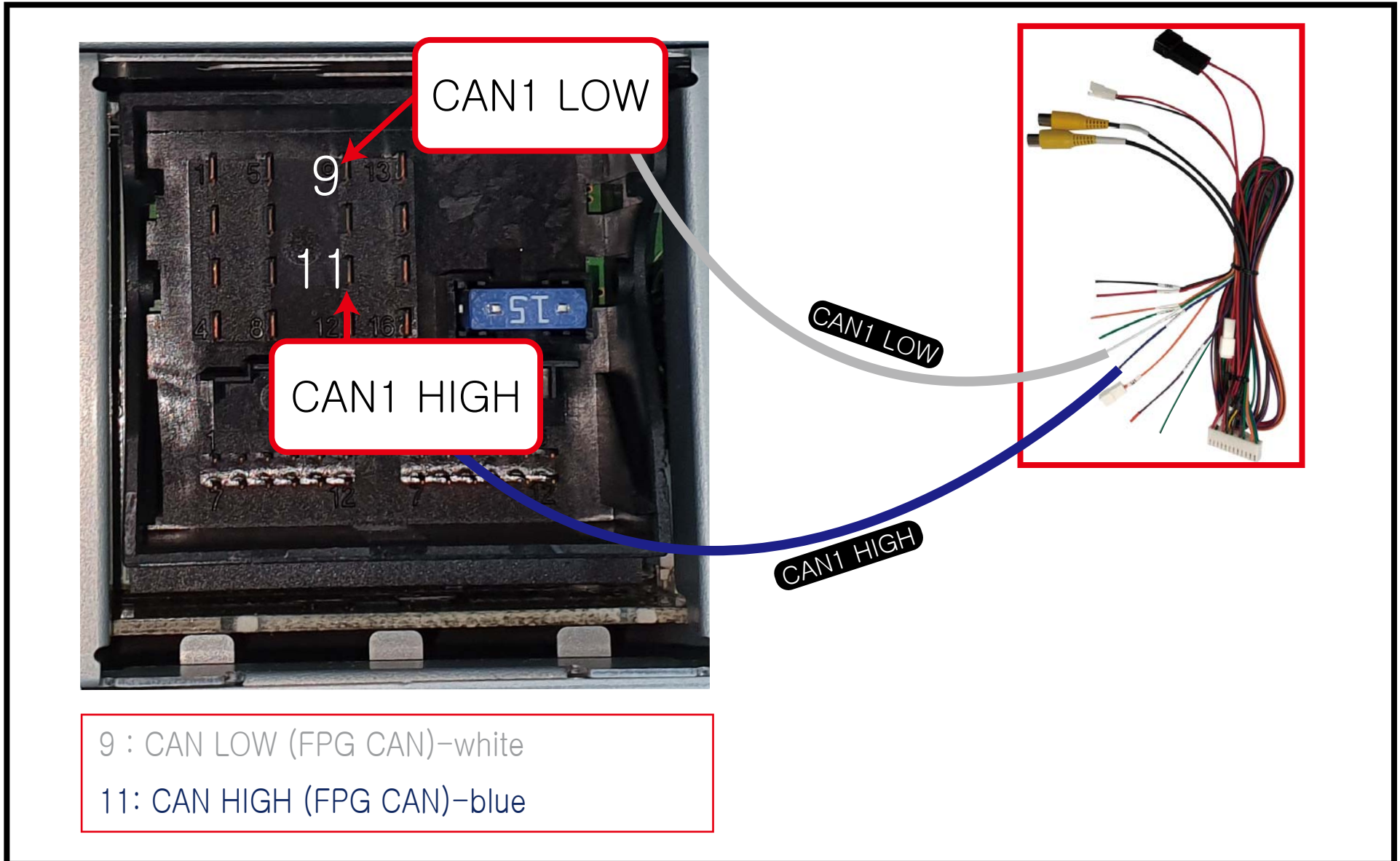
■ INSTALLATION(5-3)



■ INSTALLATION(5-4)



CAN1 HIGH/LOW INSTALLATION

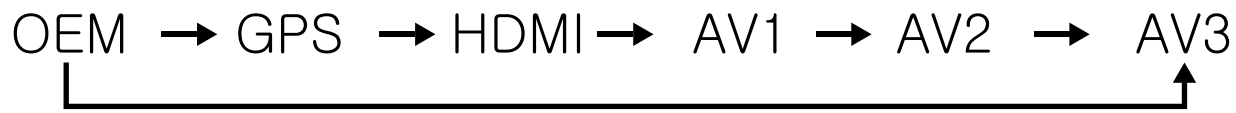


SWITCH MODE

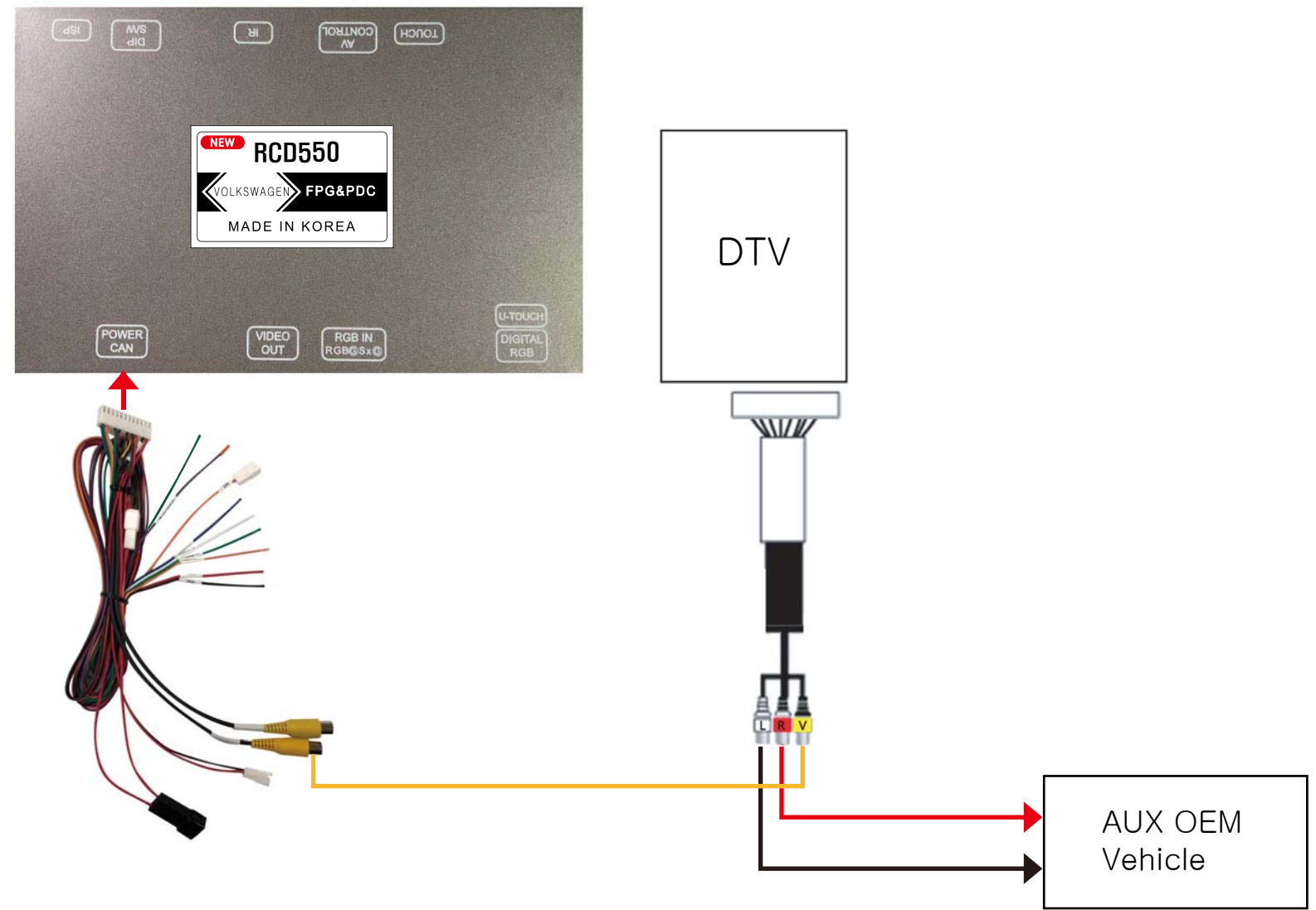
– NEW RCD550



– PRESS  PUSH BUTTON TO SWITCH MODE.



HOW TO CONNECT VIDEO AUDIO WHEN YOU USE MORE THAN 2 AV INPUTS



HOW TO CONNECT VIDEO AUDIO WHEN YOU USE MORE THAN 2 AV INPUTS

