

# 2023~ BMW EVO ID8.0, ID8.5 IU80FH MANUAL



## ■ ID8.0, ID8.5 Caution – What and how to do if the BMW screen appears after installing the interface

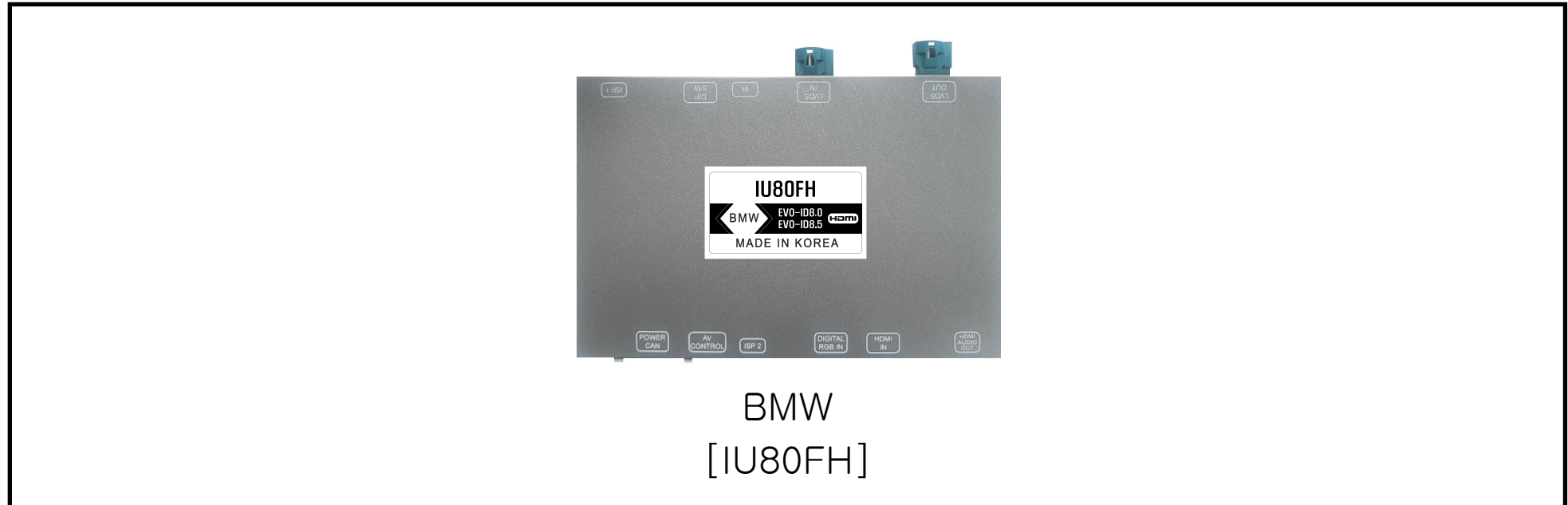


### ID8.0, ID8.5

When booting up for the first time, the BMW text or a black screen may appear on the monitor for about 9 seconds, and this may vary depending on the vehicle. BMW test is a natural phenomenon that occurs during the booting process and it is not a defect.

If the BMW text appears after installing the interface, check the IN/OUT direction of the LVDS CABLE, and if there is no problem, turn off the engine completely, lock the car doors, wait for 10 minutes, and then restart the car to solve the problem.

## MAIN UNIT OF INTERFACE



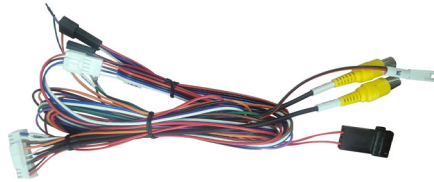
Car Brand	Model	Year Range	System
2, 3, 4, 5, 7, X5, X6, X7, EV SERIES BMW EVO		2023~	EVO-ID8.0 EVO-ID8.5

# COMPONENTS

1 MAIN UNIT



2 MAIN CABLE(ID85U)



3 LVDS CABLE X 2



4 IR CABLE



5 REMOTE CONTROL



6 4P TO 6P EXTENSION CABLE



7 HDMI AUDIO CABLE



※ OPTION ※

8 AV GENDER BOARD



※ OPTION ※

9 AV IN/OUT CABLE



※ OPTION ※

10 AV GENDER CABLE



※ OPTION ※

11 PUSH SWITCH



※ OPTION ※

## DIP S/W



PIN	FUNCTION	DIP S/W SETTING
1	External Navigation	OFF
		ON
2	Vehicle Setting	
3	Vehicle Setting	
4	Rear Camera	OFF : OEM Camera
		ON : Aftermarket Camera
5	ON	
6	Vehicle Setting	
7	Vehicle Setting	
8	Vehicle Setting	

## BMW IU80FH SPEC.

### 1. INPUT

- 1 x Digital RGB Input(LVDS IN)
- 1 x LVDS Input
- 1 x LVDS output
- 1 x CVBS(rear camera)
- 1 x CVBS(front camera or A/V)
- 1 x HDMI(THE MODEL WHICH COMPATIBLE WITH HDMI)
- 3 x A/V Input(Option)

### 2. Output

- 1 x CVBS
- 1 x Audio L/R

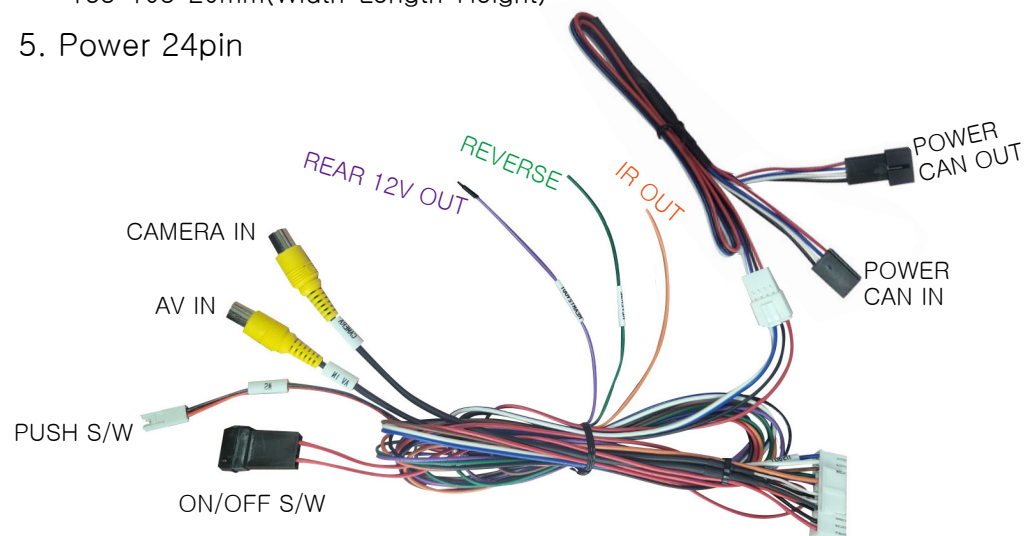
### 3. Power

- Input power : 8VDC ~ 18VDC
- Consumption : 6.5 Watt
- Ampere : 0.53A

### 4. Size

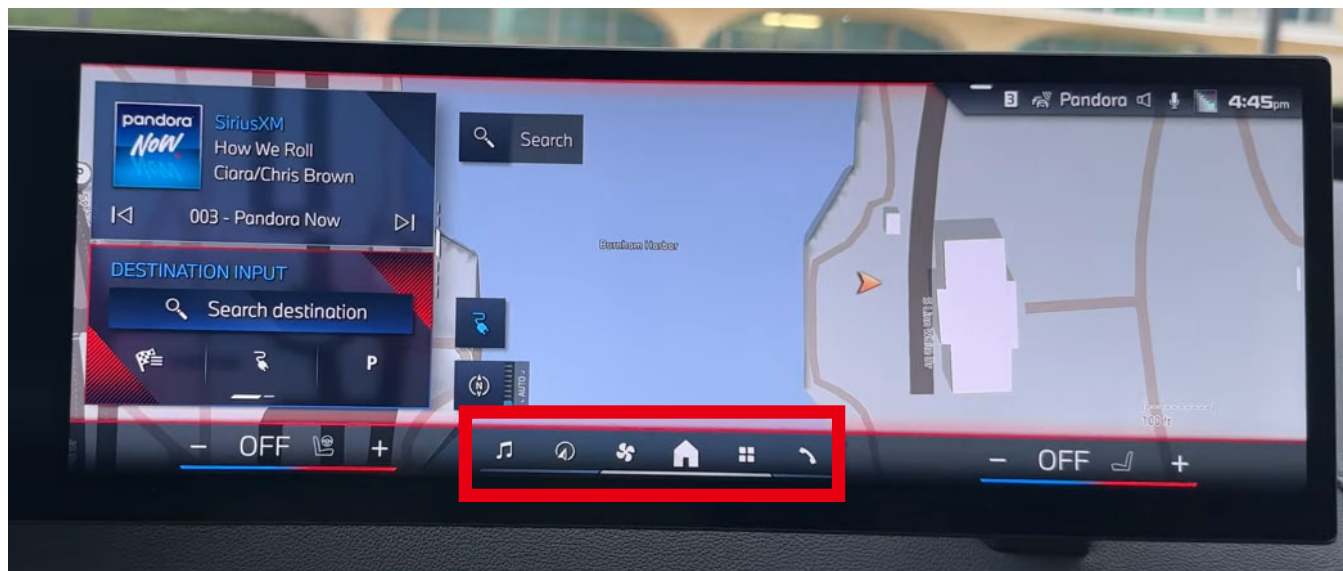
- 163\*103\*20mm(Width\*Length\*Height)

### 5. Power 24pin



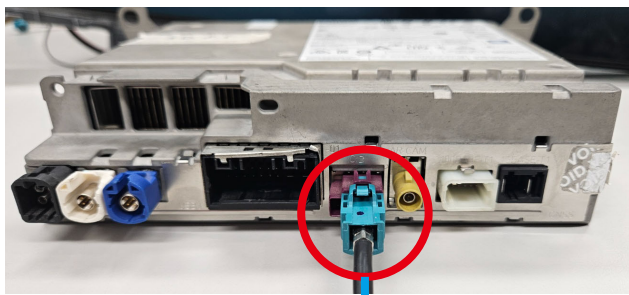


ID8.0

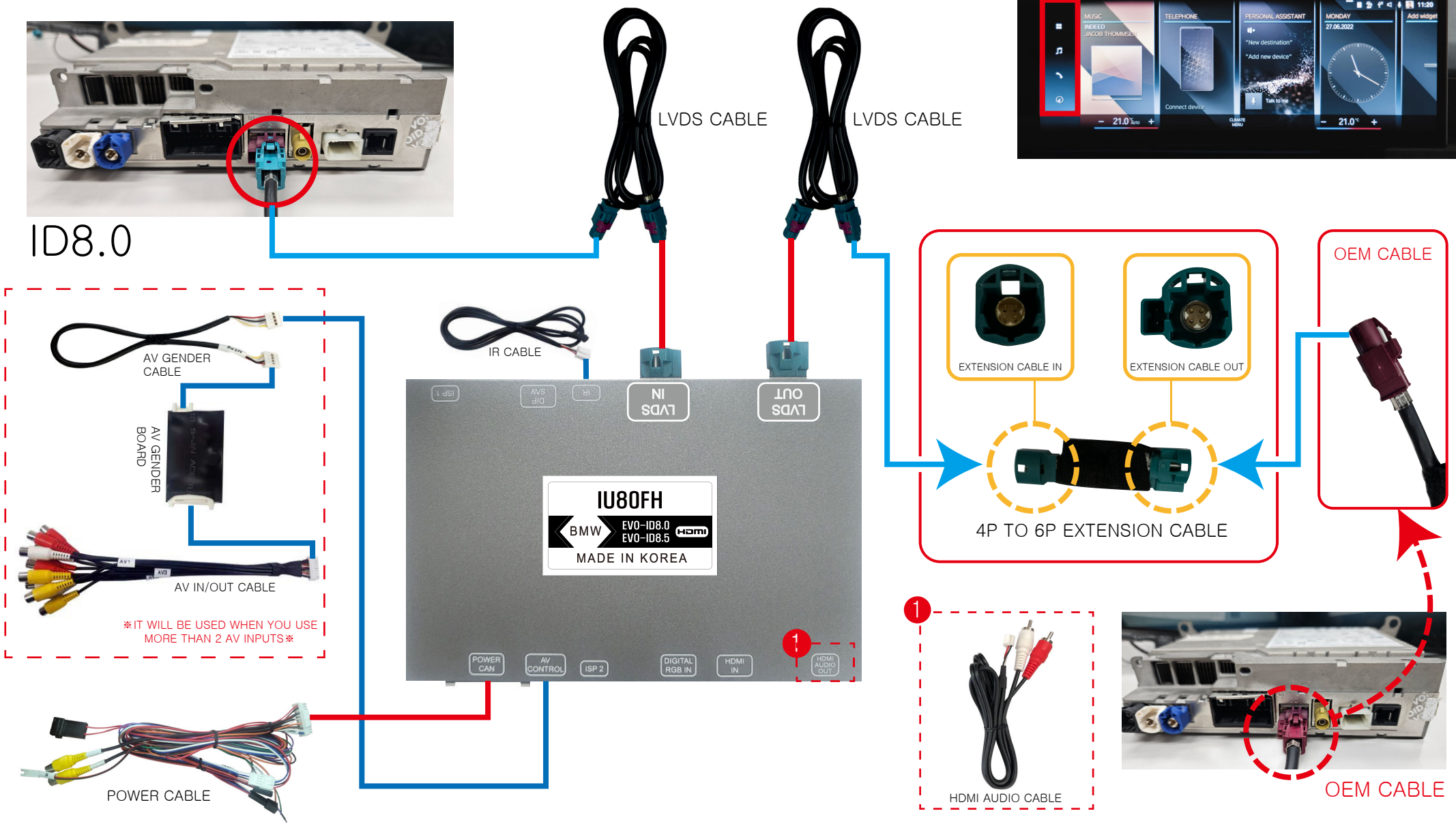


ID8.5

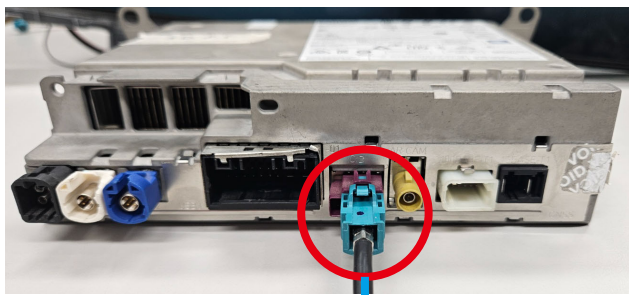
# CONNECTION – ID8.0 14.5 INCH



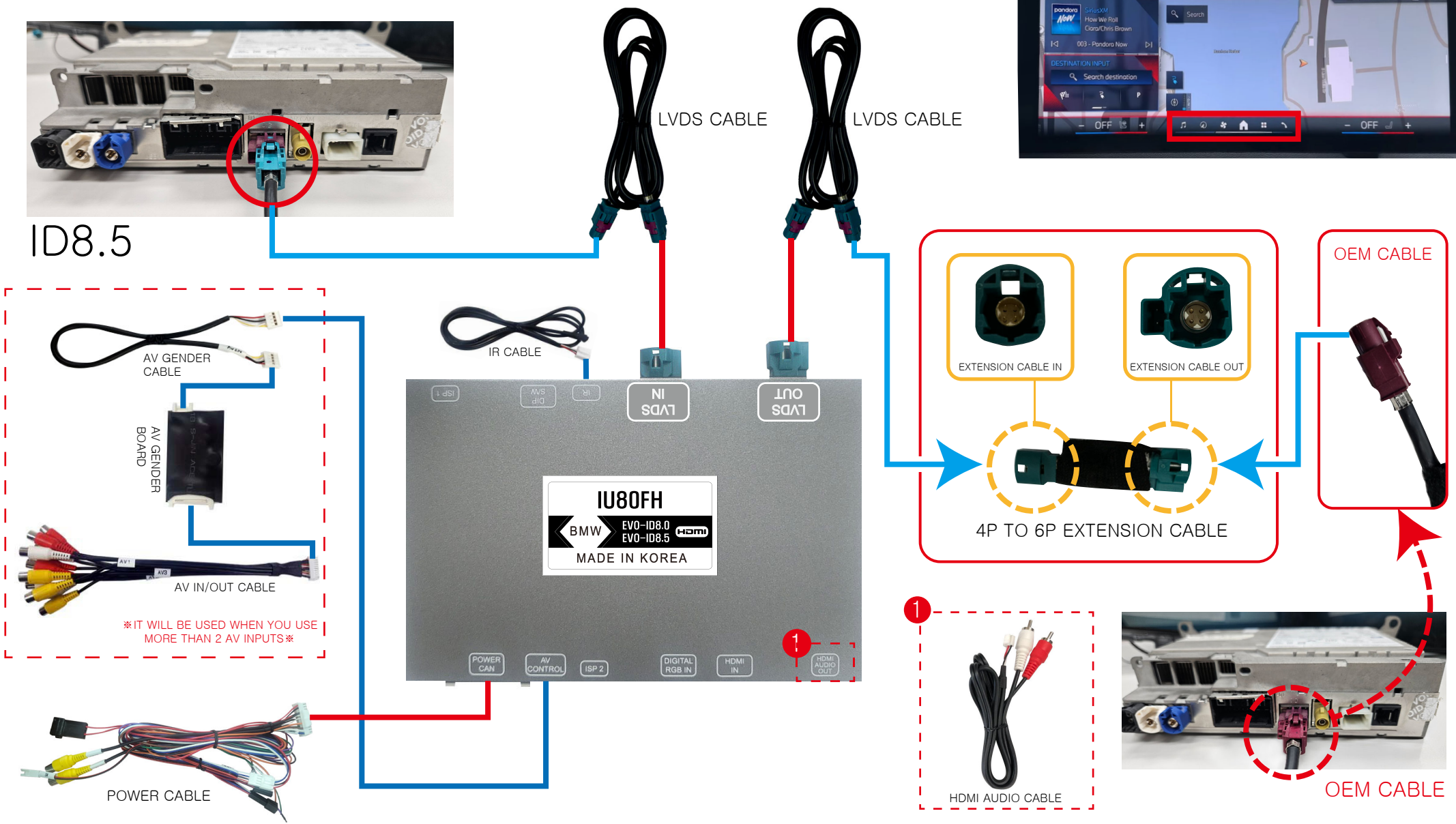
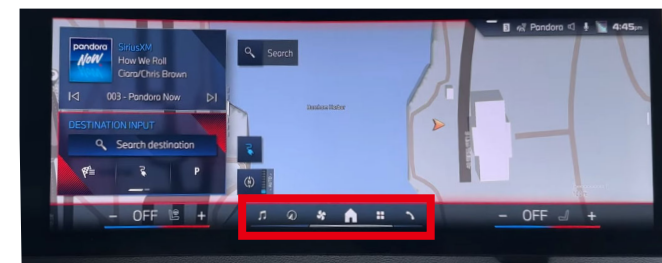
ID8.0



# CONNECTION – ID8.5 14.5 INCH



ID8.5



\*IT WILL BE USED WHEN YOU USE MORE THAN 2 AV INPUTS\*



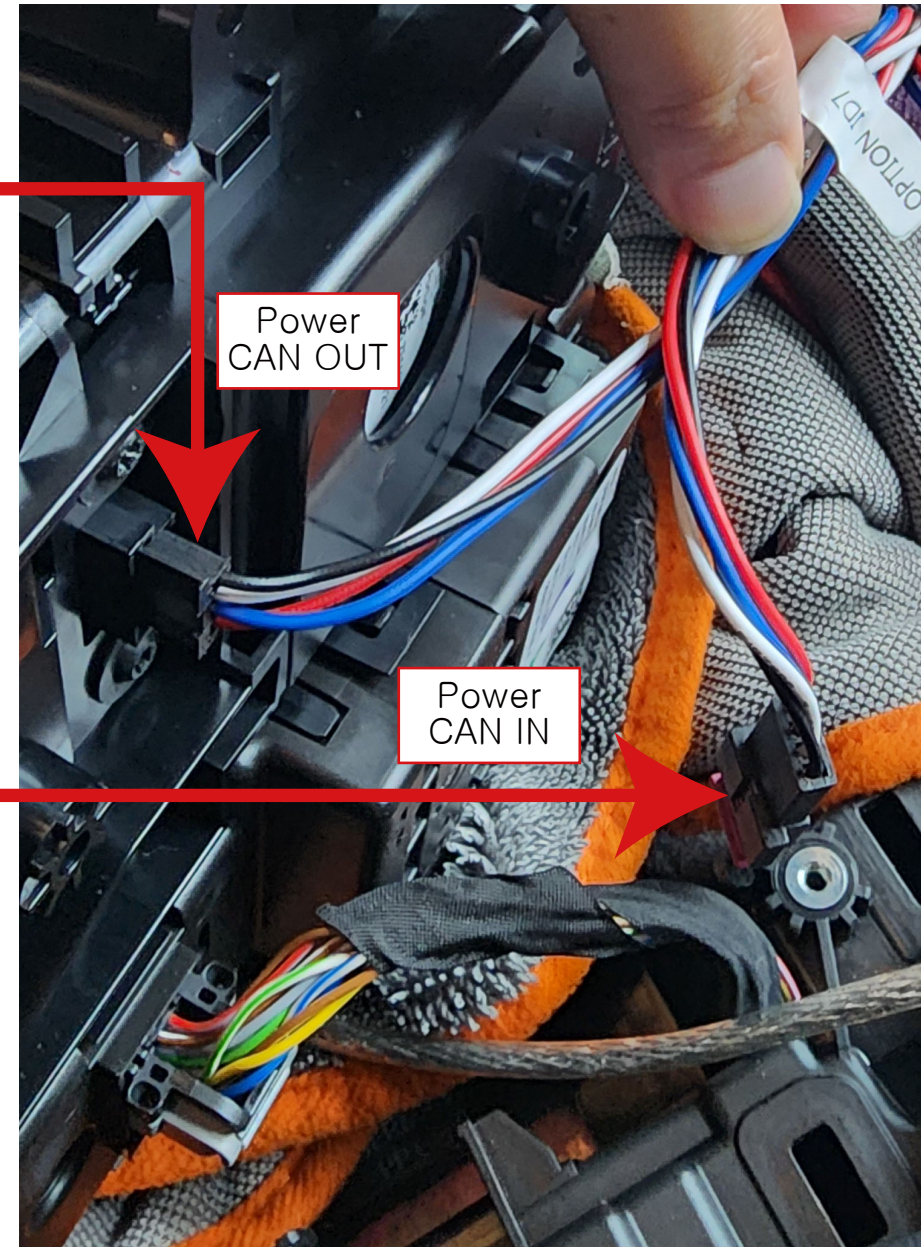
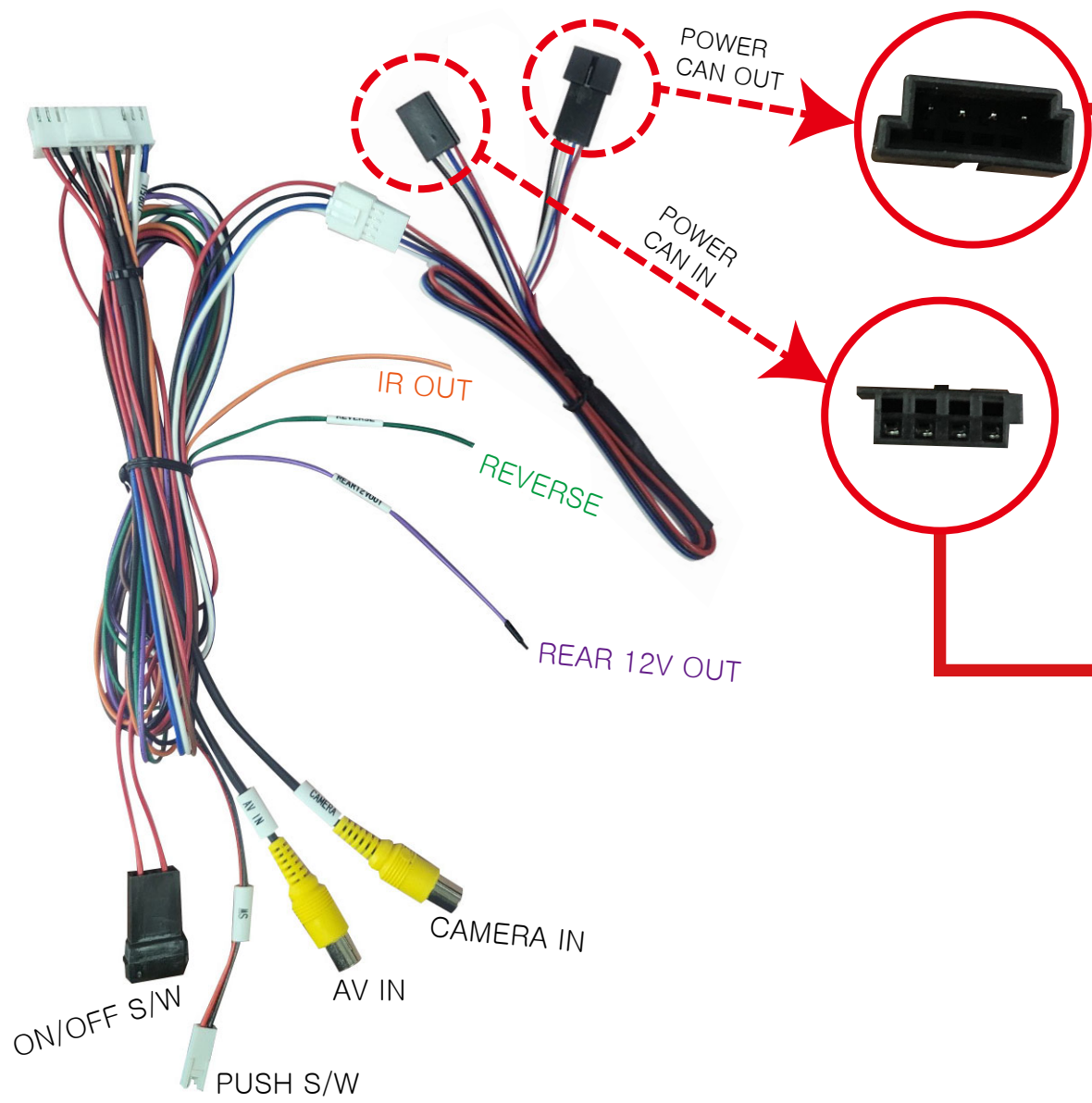
HDMI AUDIO CABLE



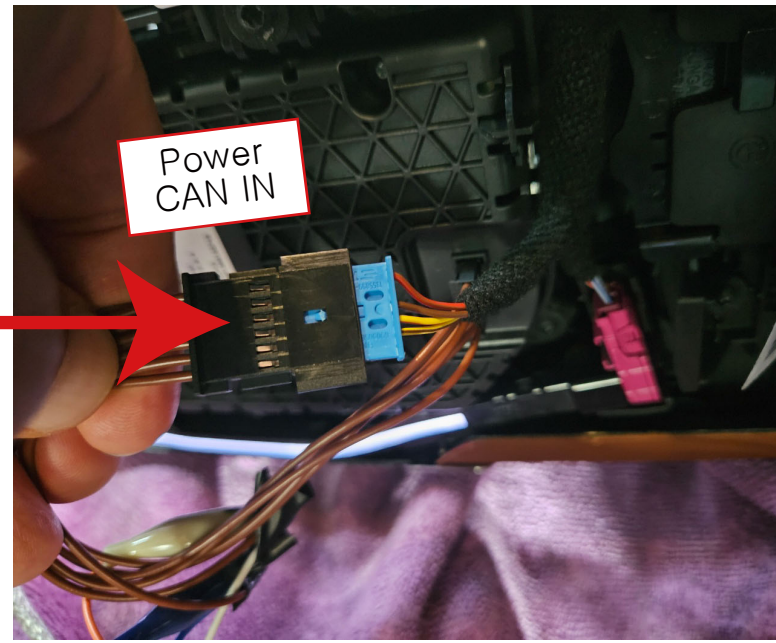
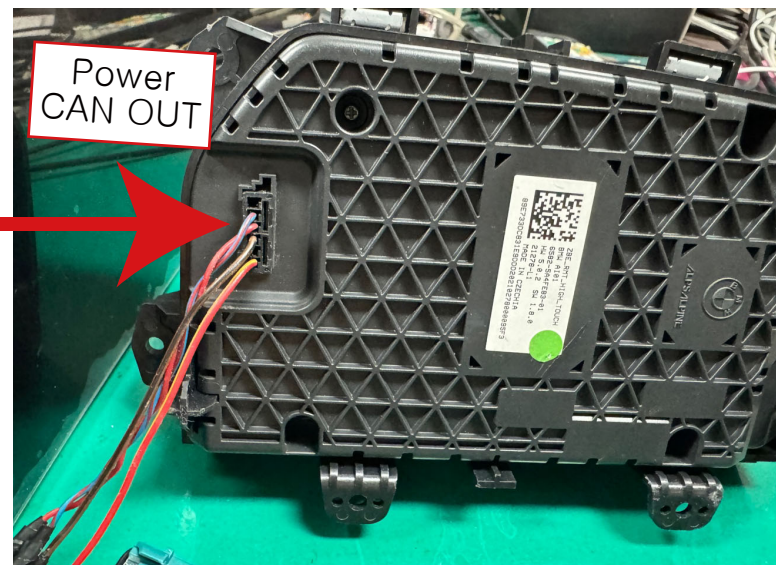
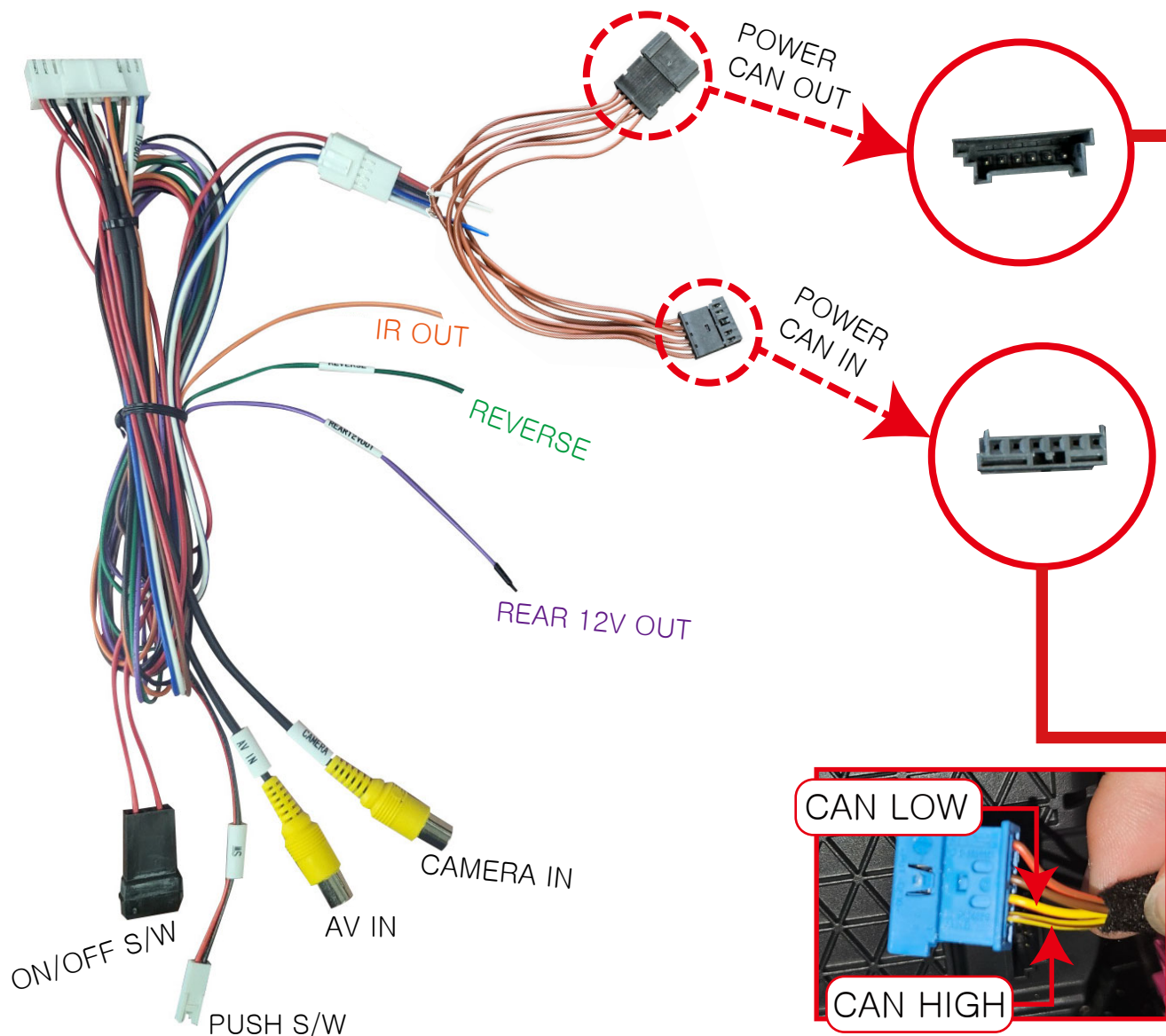
OEM CABLE



# ■ INSTALLATION – POWER CAN(ID8.0)




# ■ INSTALLATION – POWER CAN(ID8.5)



# METHOD OF MODE SWITCH

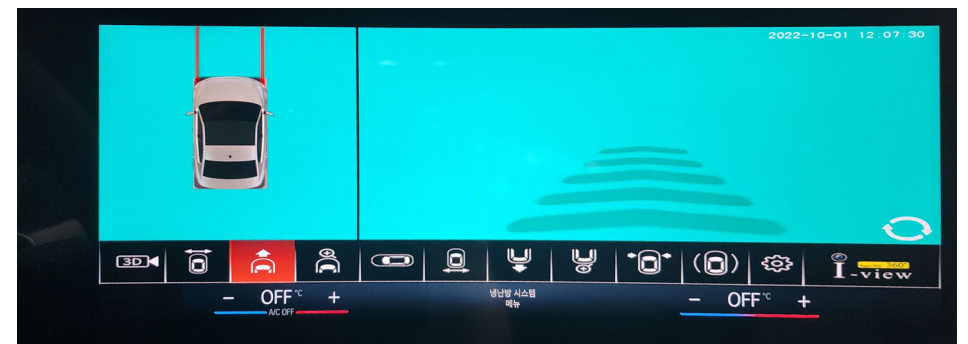
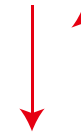


PRESS **A** NAV , **B**  BUTTON LONG FOR SWITCHING MODE

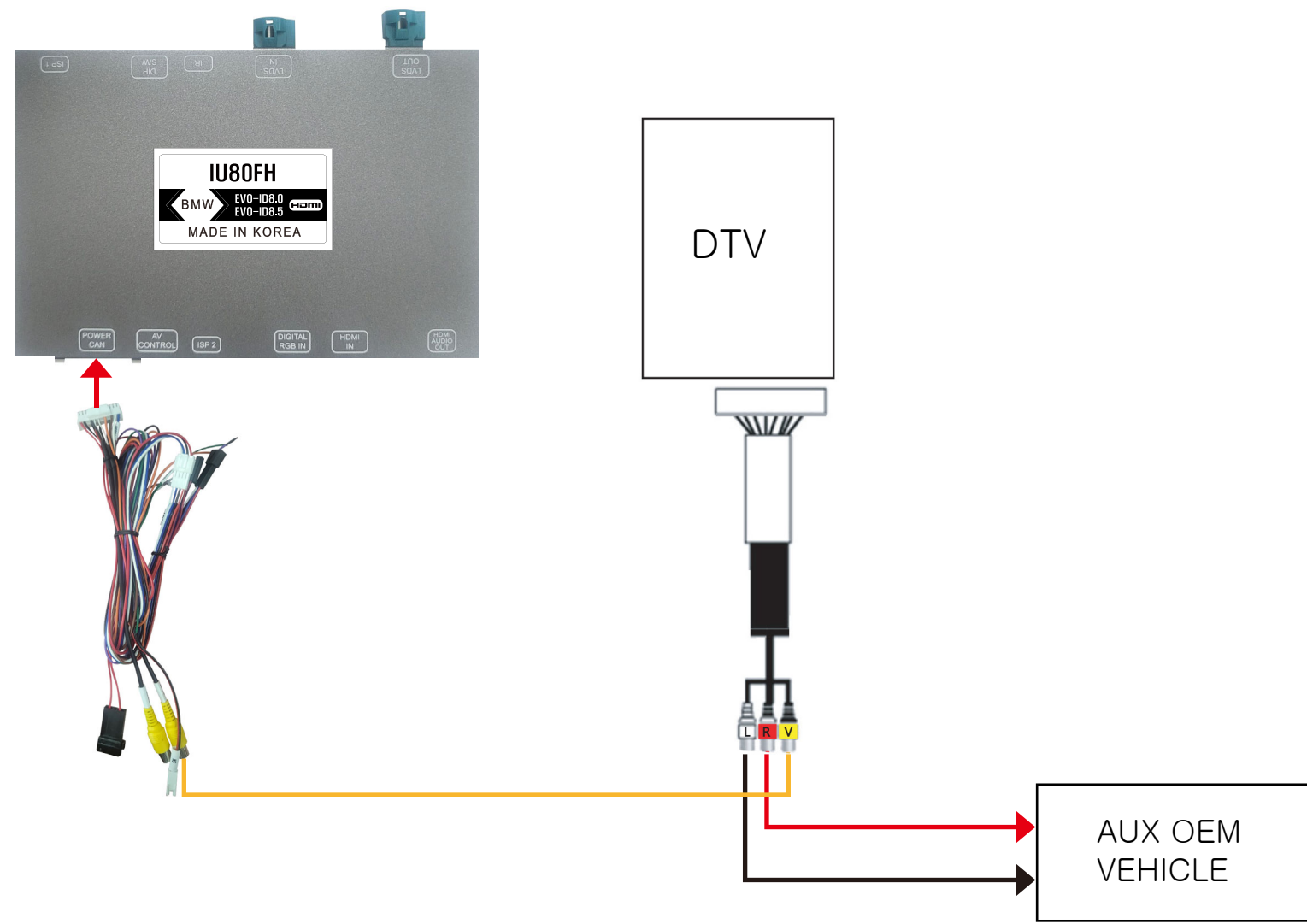
OEM → GPS → AV1 → AV2 → AV3 → HDMI

↑

# METHOD OF REAR MODE SWITCH



# HOW TO CONNECT VIDEO AUDIO WHEN YOU ONLY USE ONE AV INPUT



# HOW TO CONNECT VIDEO AUDIO WHEN YOU USE MORE THAN 2 AV INPUTS

