



2016 VOLKSWAGEN SHARAN MANUAL

1. SHARAN (IU25ST)
2. SHARAN (IU25ST HDMI)

MAIN UNIT

<p>1</p> <p>SHARAN [IU25ST]</p>	<p>2</p> <p>SHARAN [IU25ST HDMI]</p>		
Car Brand	Model	Year Range	System
Volkswagen	Sharan	2016	

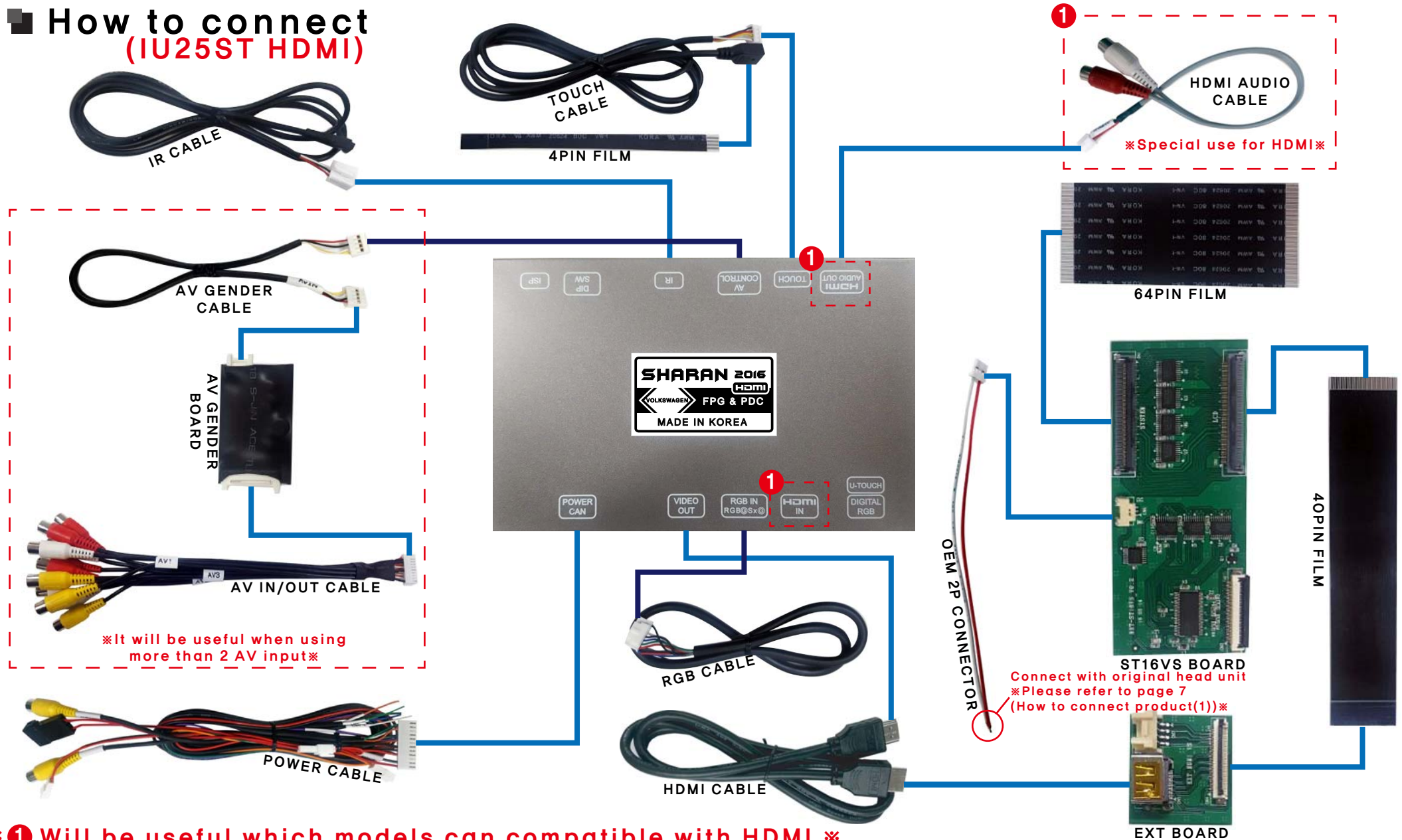
Components

<p>1 MAIN UNIT</p>	<p>2 MAIN CABLE</p>	<p>3 RGB CABLE</p>	<p>4 IR CABLE</p>
<p>5 HDMI CABLE</p>	<p>6 REMOTE CONTROL</p>	<p>7 TOUCH CABLE</p>	<p>8 ST16VS BOARD</p>
<p>9 EXT BOARD</p>	<p>10 OEM 2P CONNECTOR</p>	<p>11 40PIN FILM</p>	<p>12 4PIN FILM</p>
<p>13 64PIN FILM</p>	<p>14 AV IN/OUT CABLE</p> <p>* Purchase Separately *</p>	<p>15 AV GENDER CABLE</p> <p>* Purchase Separately *</p>	<p>16 AV GENDER BOARD</p> <p>* Purchase Separately *</p>

■ 제품 구성



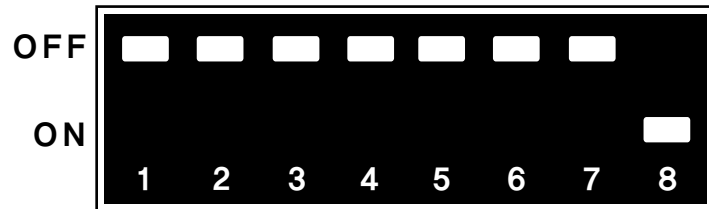
How to connect (IU25ST HDMI)



※ ① Will be useful which models can compatible with HDMI ※

DIP S/W

OFF : ↑ (UP) / ON : ↓ (DOWN)



PIN	FUNCTION	DIP S/W SETTING
1	GPS INPUT MUTE	OFF : GPS nonuse ON : GPS use
2	Vehicle setting	
3	Vehicle setting	
4	Rear camera	OFF : OEM camera ON : aftermarket camera
5	Vehicle setting	
6	Vehicle setting	
7	Resolution setting	OFF : resolution 800 ON : resolution 480
8		ON

SPEC

1. INPUT SPEC

- 1 x Analog RGB Input(GPS system output)
- 1 x LVDS Input
- 1 x LVDS output
- 1 x CVBS(rear camera)
- 1 x CVBS(front camera or A/V)
- 1 x HDMI(Special use for HDMI)
- 3 x A/V Input(Option)

2. OUTPUT SPEC

- 1 x CVBS
- 1 x Audio L/R

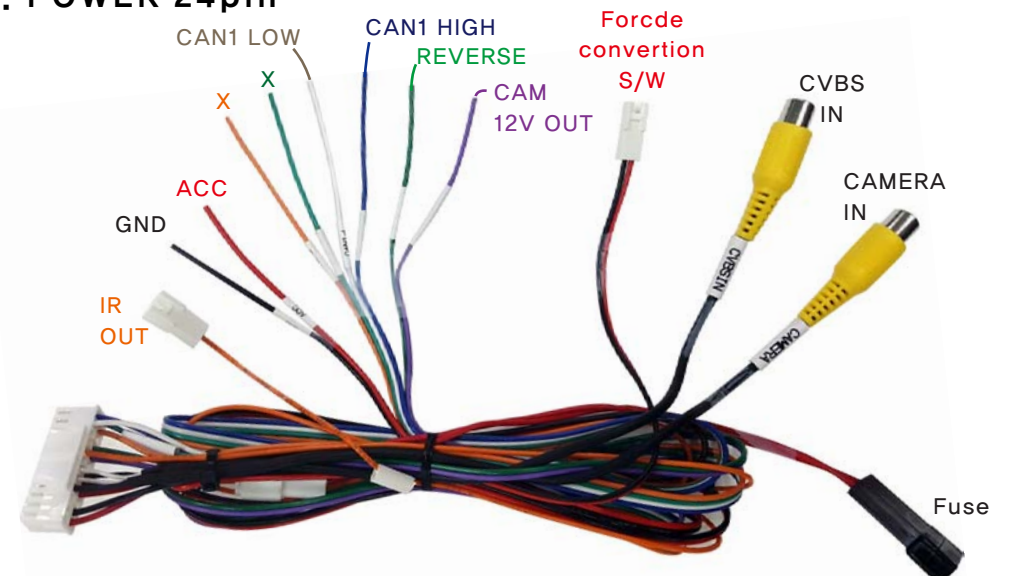
3. POWER SPEC

Input power : 8VDC ~ 24VDC
Consumption : 5WATT

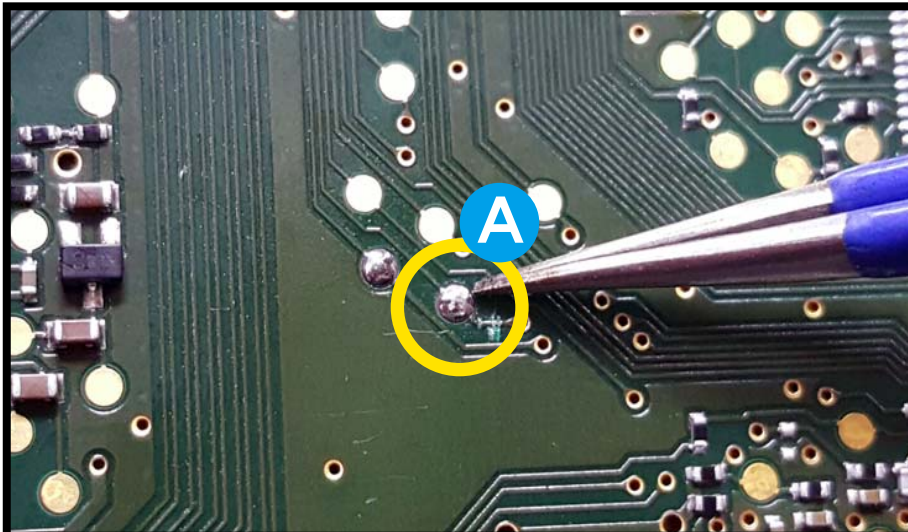
4. SIZE

154*98*20mm(Width*Length*Height)

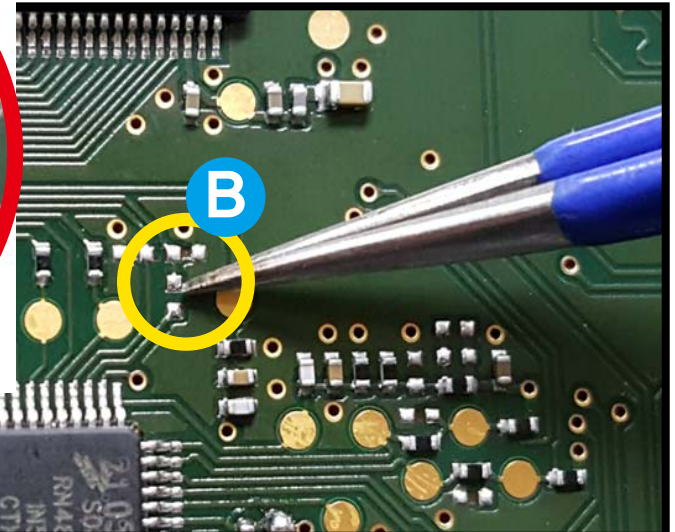
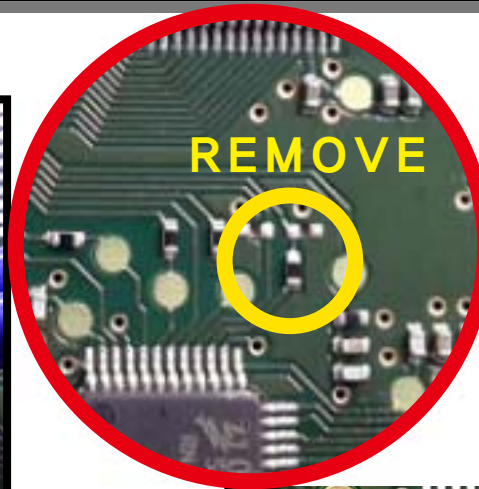
5. POWER 24pin



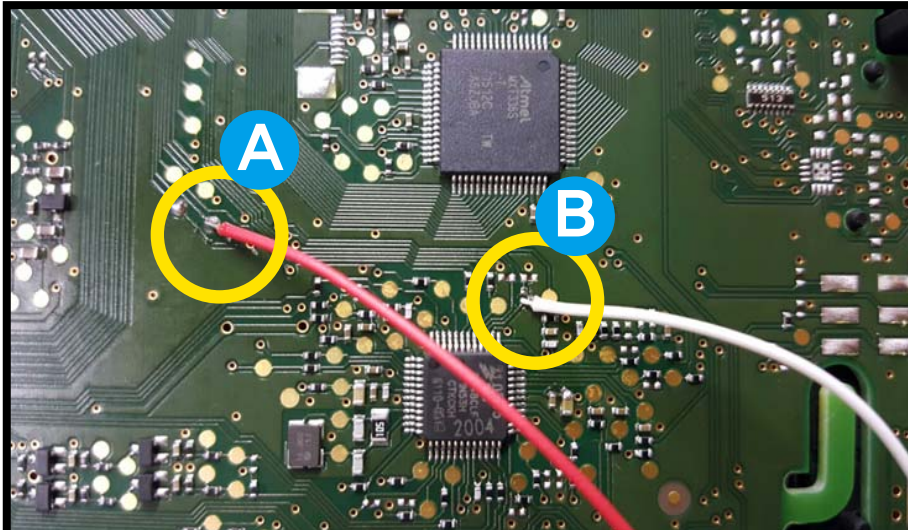
How to connect product(1)



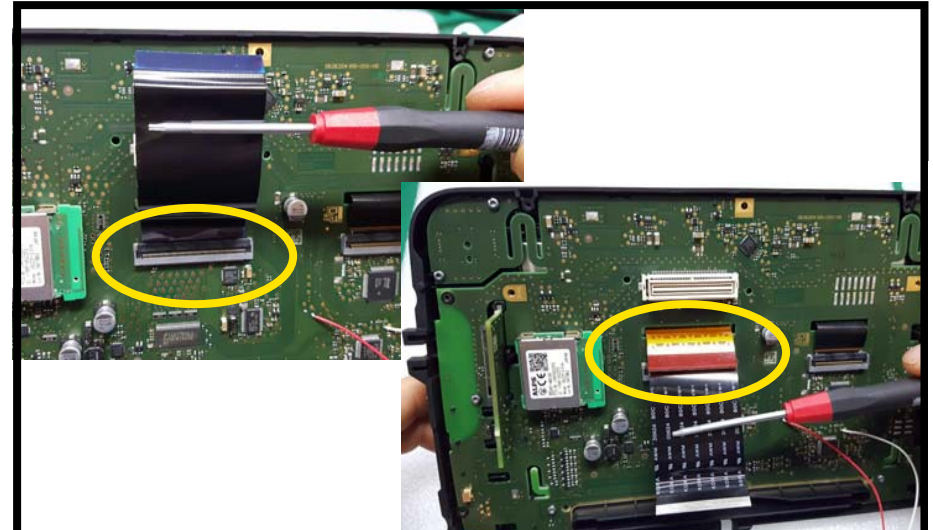
1. Please connect red wire with soldering A.



2. Please connect white wire with soldering B.

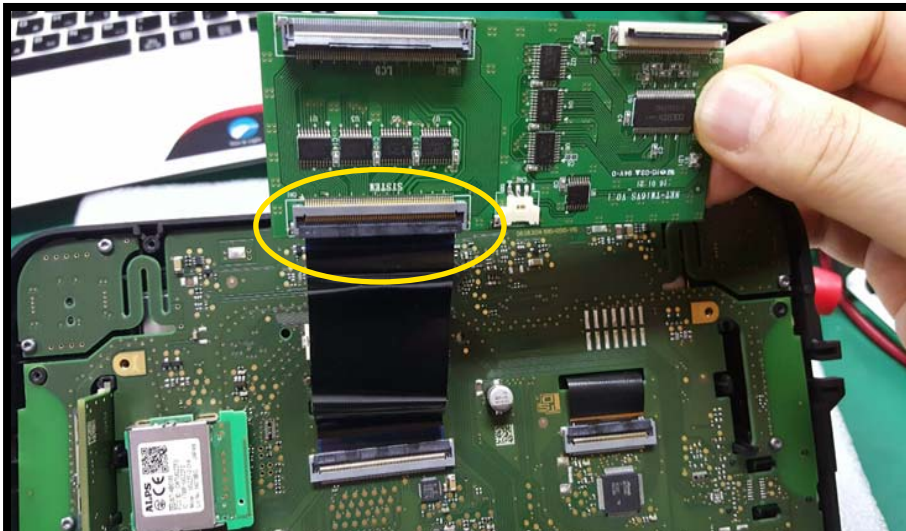


3. After connecting.

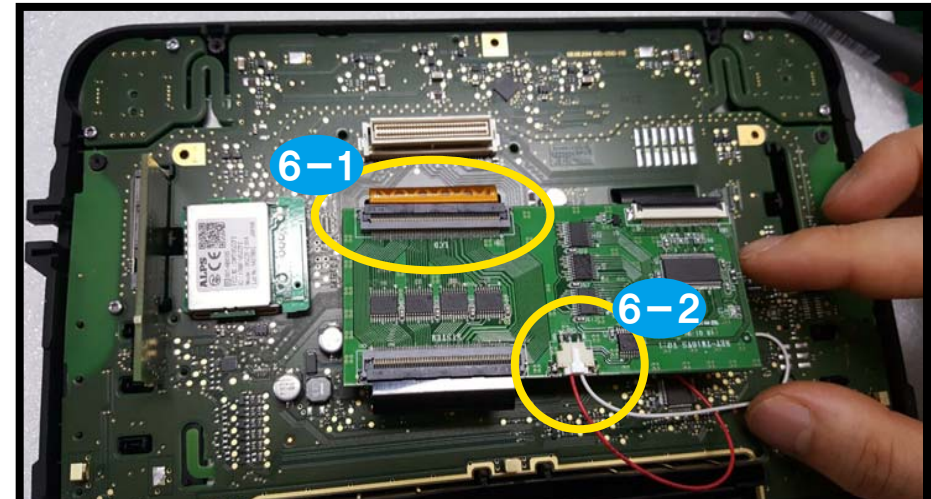


4. Please connect 64pin film cable with original connector.

How to connect product(2)

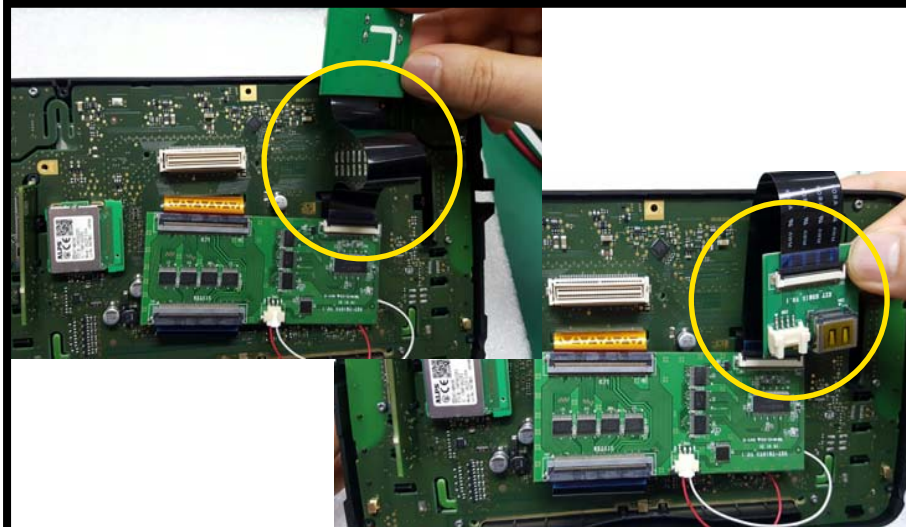


5. Please connect ST16VS serve board connector with connected 64pin film.

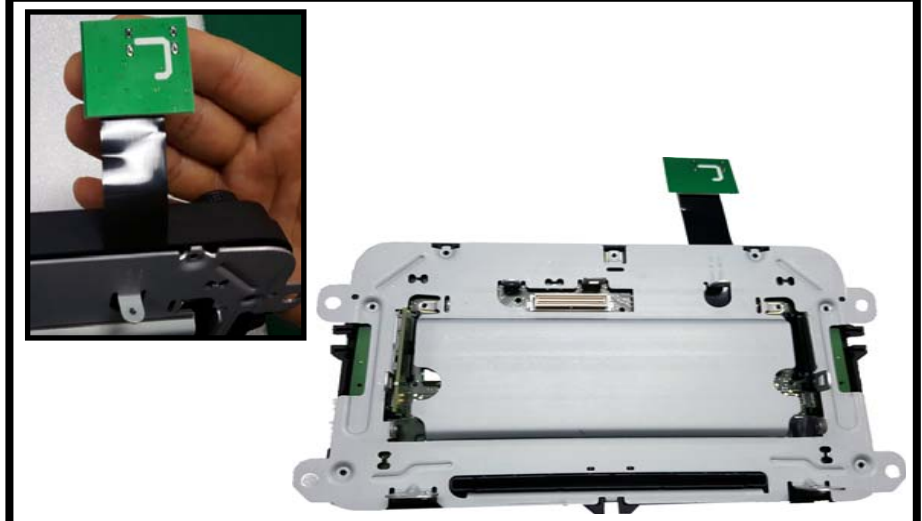


6-1. Please connect original 64pin cable with LCD connector of ST16VS board.

6-2. Please connect soldred red wire and white wire with ST16VS 3pin connector.



7. Please connect 40pin film cable with ST16VS board and EXT board.



8. After connecting.

How to switch the screen



Screen will be switch when pressing menu button for short.

OEM → GPS → AV1 → AV2 → AV3

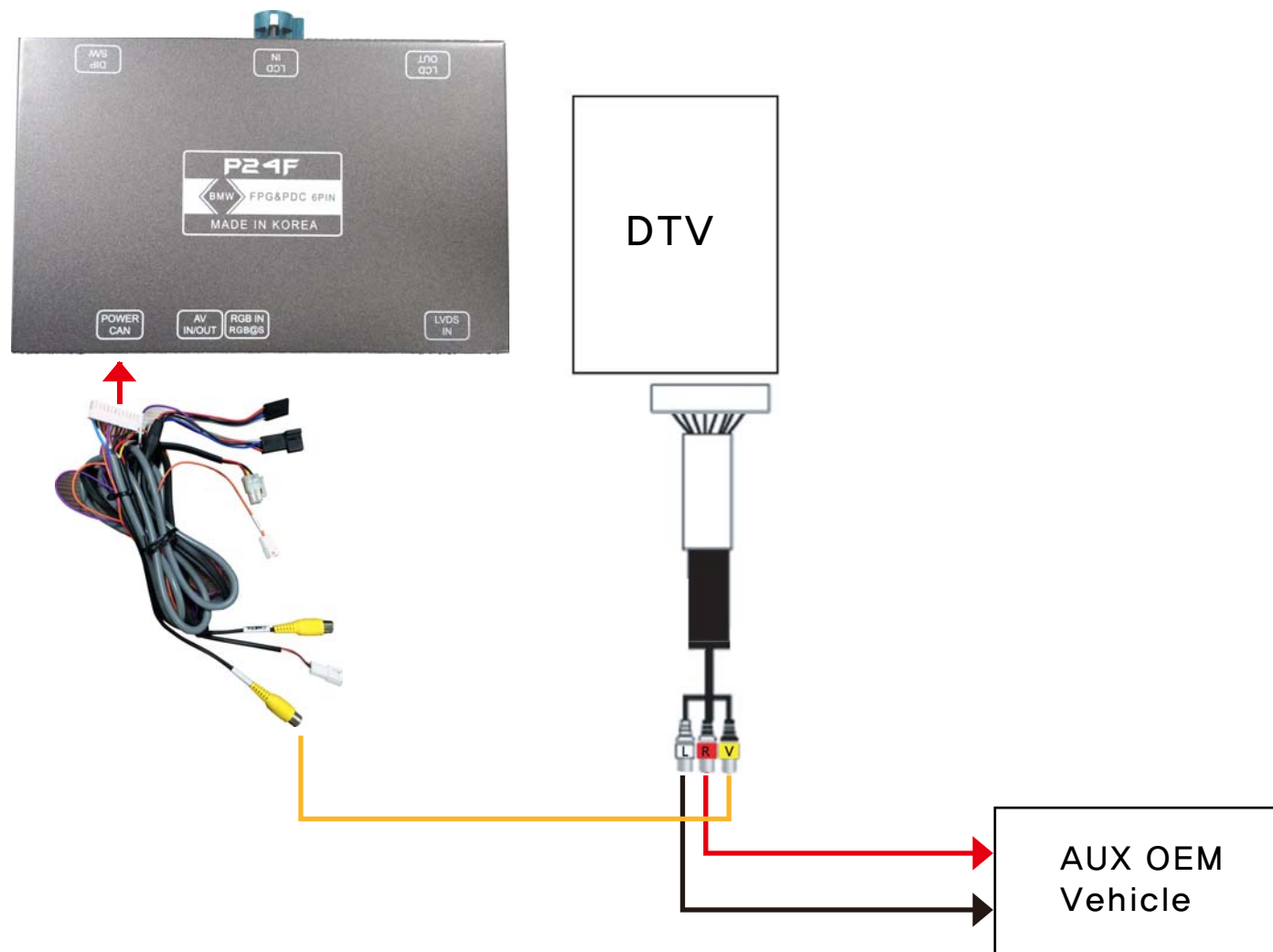
※ It can touch on Black box monitor screen ※



2016 SHARAN CAN HI

2016 SHARAN CAN LOW

How to connect video or audio when connecting one external AV.



How to connect video or audio when connecting more than two external AV.

